

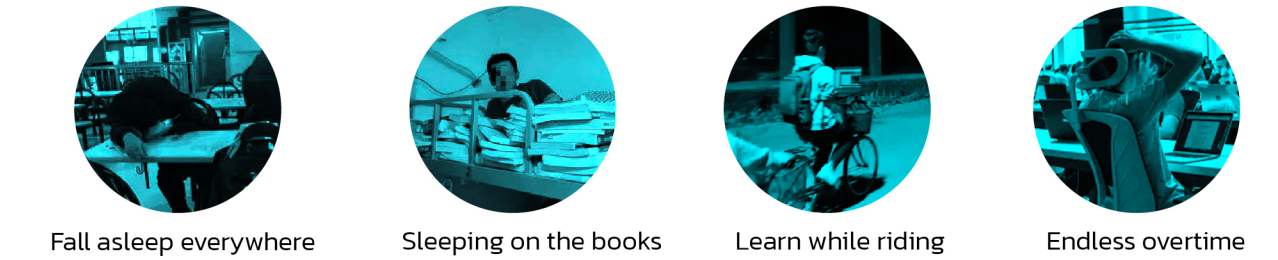
# INVOLUTION

In today's society, "involution" has evolved from an individual's efforts to improve himself to a common phenomenon that affects everyone. People compare who works the longest hours, who gets more done during working hours, and who stays up the latest. For human beings, people are under heavy pressure in life and cannot appreciate the joy of life.



# RESEARCH

## INVOLUTION



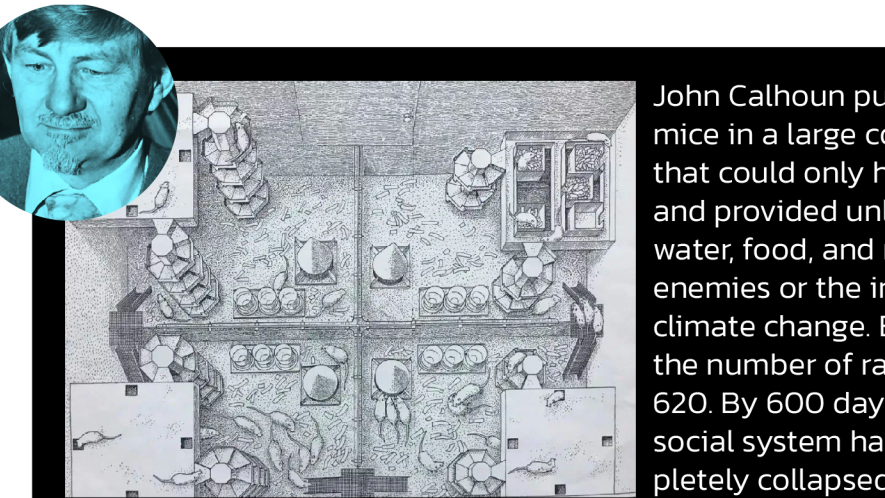
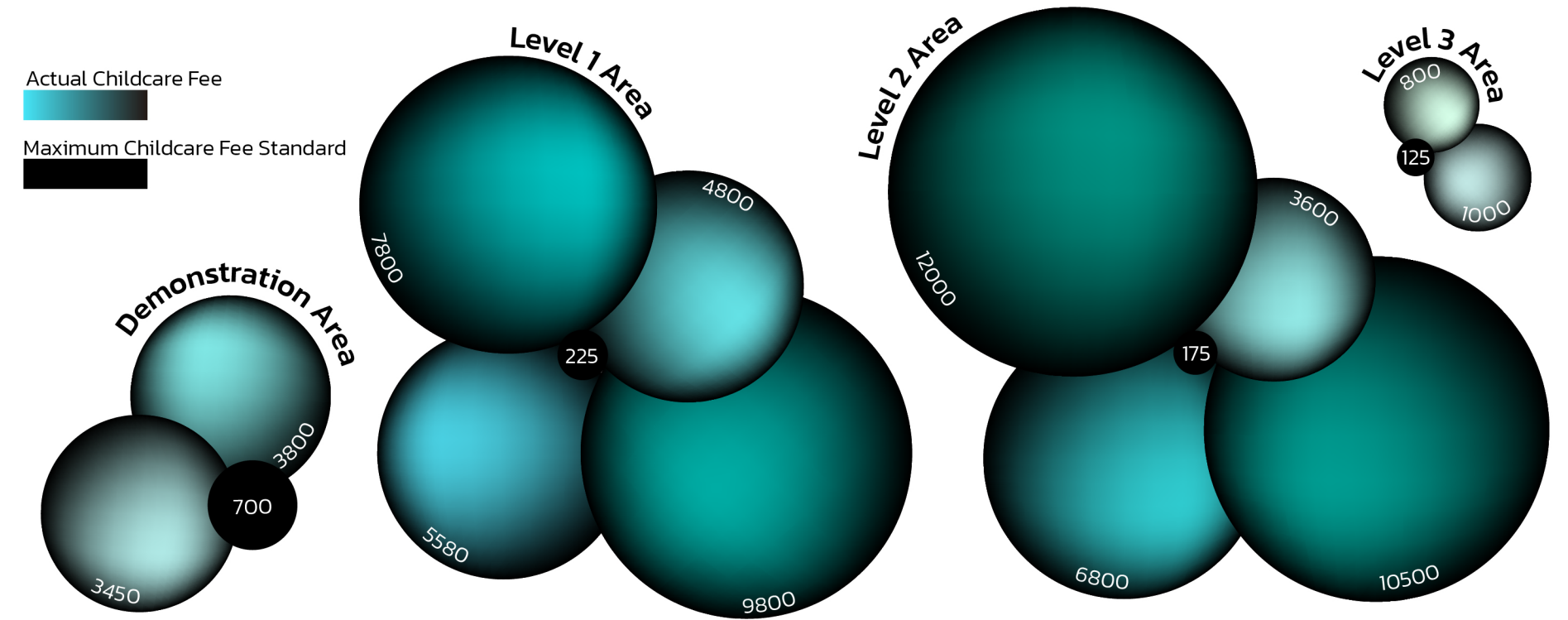
Tech workers have begun to sense the involution of their lives: those employed at large tech firms often work hours known as “996” (nine in the morning to nine in the evening, six days a week). Whereas “996” was once a badge of honor, the phrase is now uttered with ironic despair, and has swelled into new iterations such as “007” (working online twenty-four hours a day, seven days a week).

From children who have just entered kindergarten, to candidates who are trying to get a place in the college entrance examination, to employees who have a salary to live, to the elderly who have a more comfortable retirement life, almost every age group is involved.



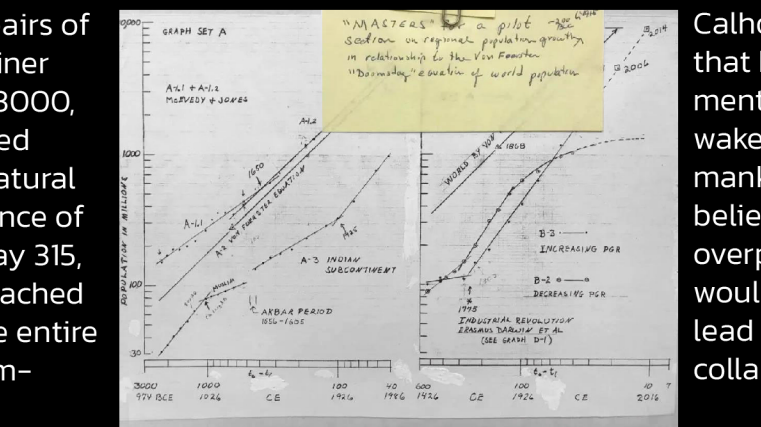
Child Teenager  
Middle-aged Elder

List of prices for private and public kindergartens in Shanghai



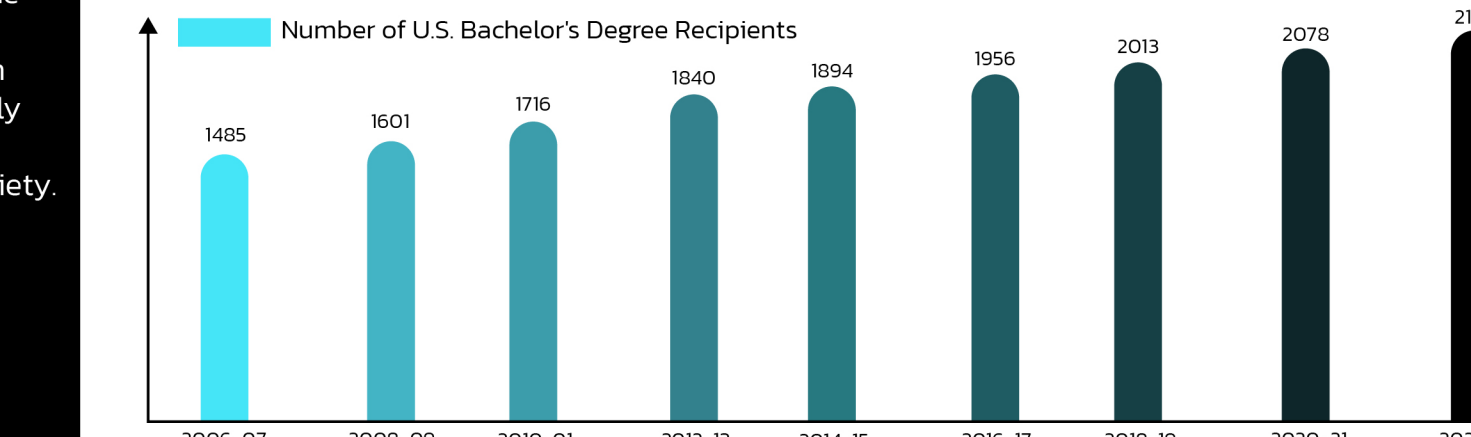
"Universe 25" 1968 Maryland, USA , John Calhoun

But in this experiment, the involution phenomenon caused by insufficient resources and uneven resource distribution is equally shocking. And this way of catching up is bound to be accompanied by involution. Capitalist cities are the main battlefields of sterilization, and the continuous inflow of population constitutes the power source of involution.



Calhoun's calculations on population growth

In the US, research shows that 4 in 10 millennials aged 25–37 have a bachelor's degree or higher, but earn less than the previous generation's equivalent education level. More and more highly educated people are reduced to working machines, even if they are highly educated, they cannot win better positions. Involution cannot change the status quo of society, people cannot change society, and society cannot be changed by people. Involvement cannot change the person himself. Is involution really a way to change the status quo?

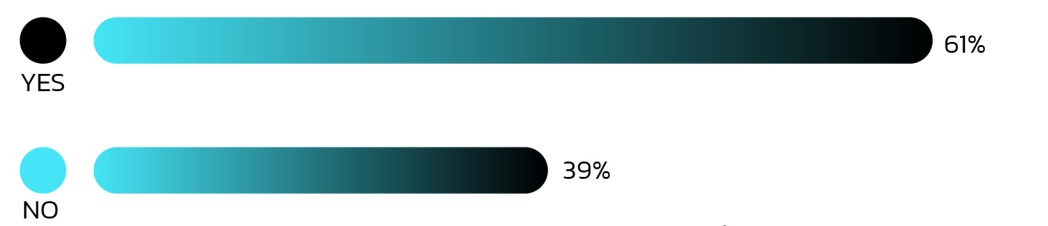


## QUESTIONNAIRE

In order to understand the public's views on the phenomenon of involution, a total of 2,200 valid questionnaire samples were collected.

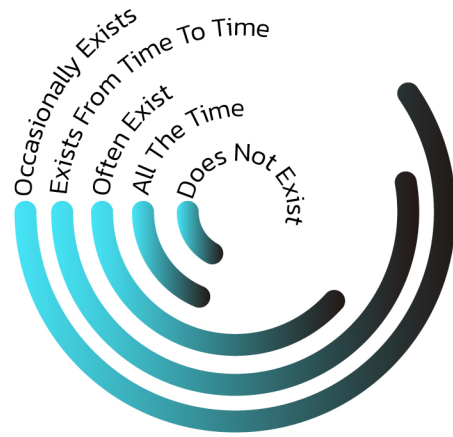
### Is introversion tiring?

61% of the interviewees think that introversion makes them feel tired, and severely reduces their exercise and rest time, and they cannot escape from the vicious circle.



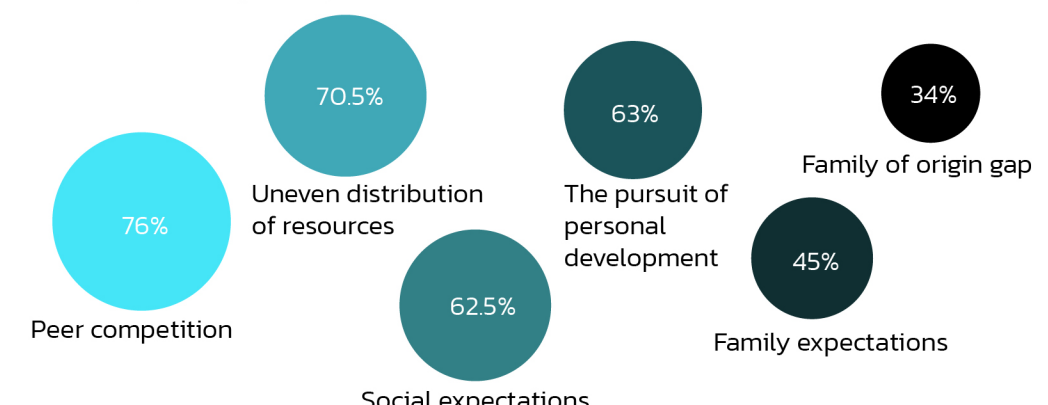
### How often does involution occur around you?

Everything can be involutioned, and the phenomenon of involution has spread to many people.



### What is the reason for the involution?

Competition among peers, uneven distribution of resources, social expectations, pursuit of personal development, family expectations, and gaps in the family of origin may be the reasons.

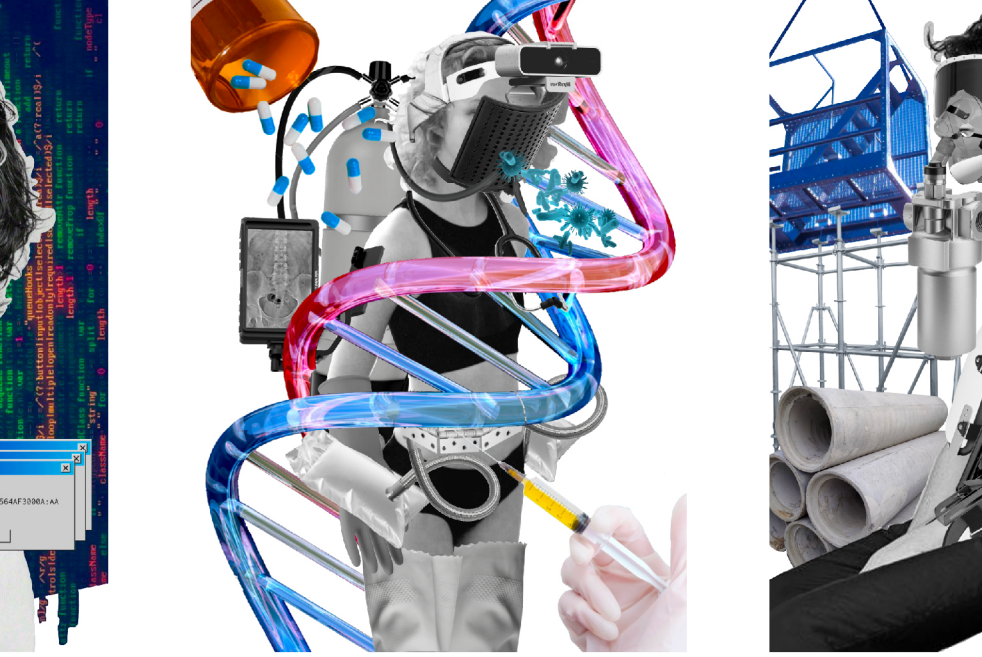
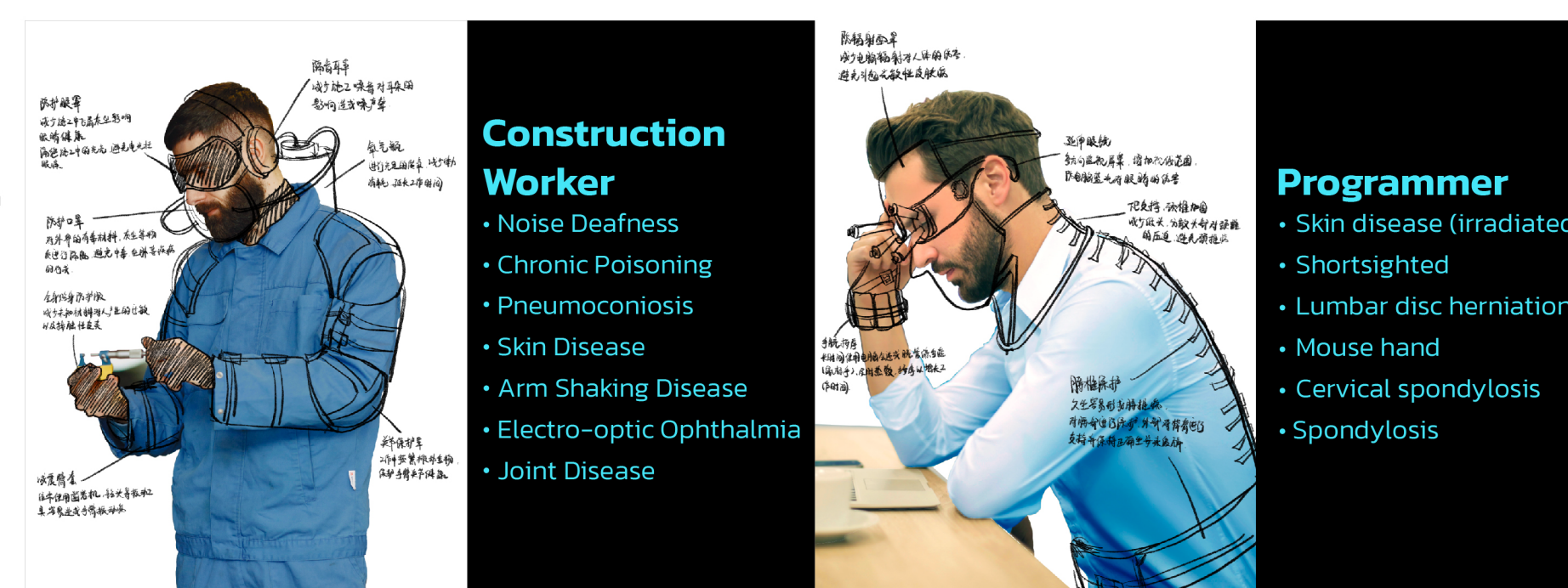
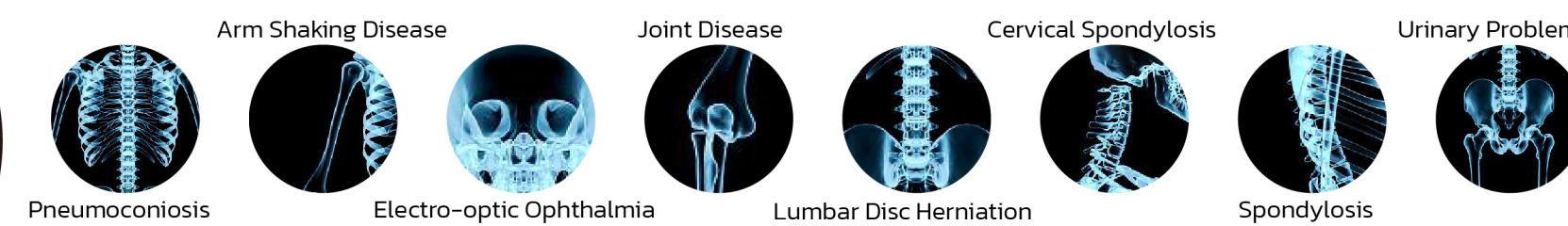


# COLLAGE

## OCCUPATION PRONE TO OCCUPATIONAL DISEASES



## TYPES OF OCCUPATIONAL DISEASES



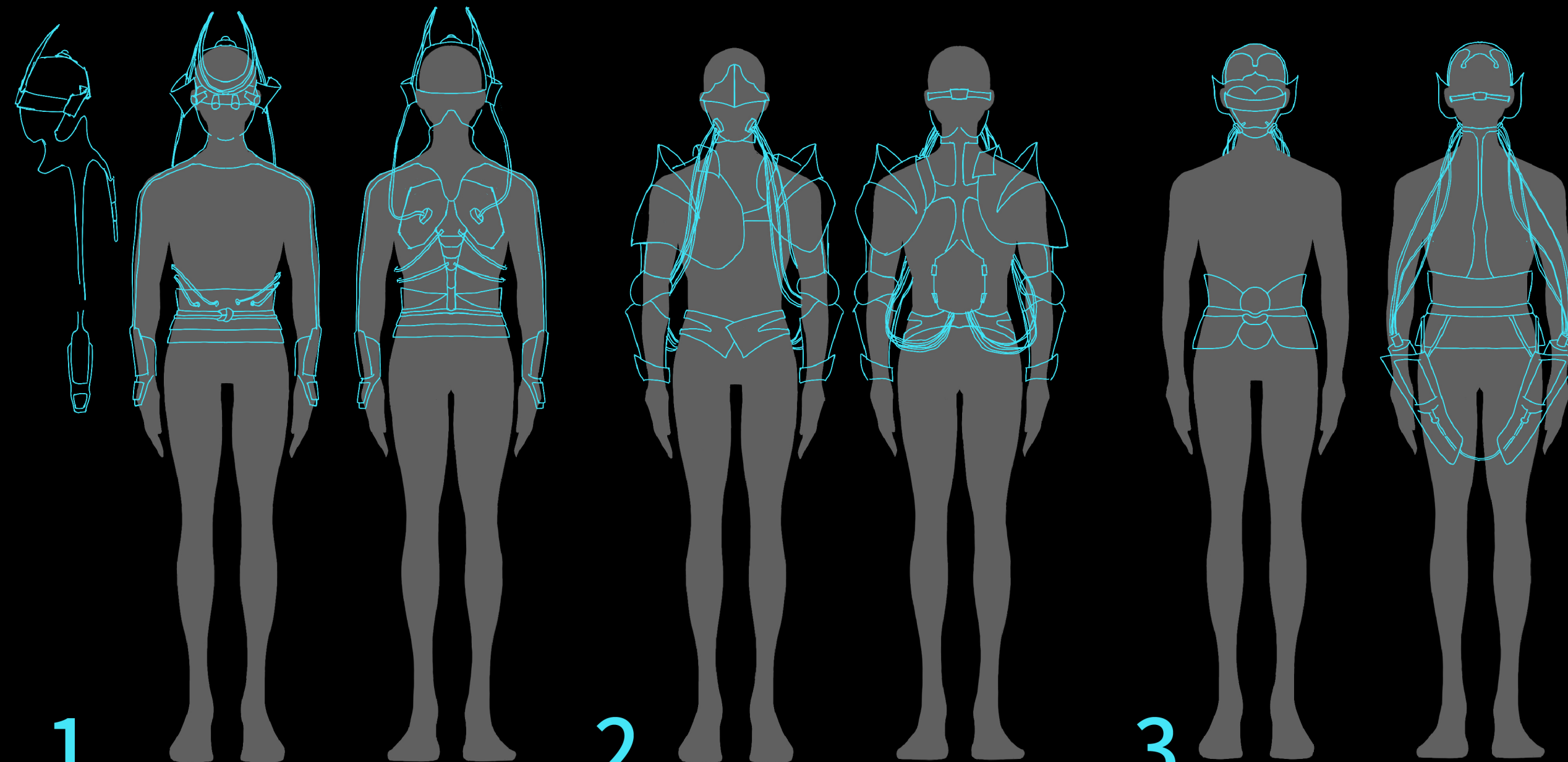
I found that they all had a variety of work-related diseases, and these work-related diseases were affecting their lives and working conditions, so I mainly focused on three occupations, namely construction workers, programmers and doctors.





# SKETCH

The exoskeleton is attached to the outside of the human body to help people work and protect people. From this, I thought of ancient armor. Then I made the shape of the exoskeleton according to the armor styles of Europe, Japan, and China.



1

## PROGRAMMER'S EXOSKELETON

Referring to the style of Japanese armor, it protects the face, eyes, cervical spine, waist, and wrists from work-related diseases.

2

## CONSTRUCTION WORKER'S EXOSKELETON

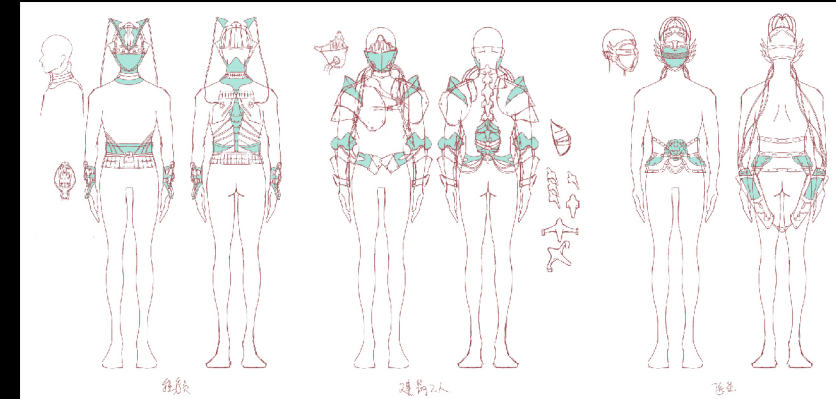
Referring to the style of European armor, it protects the eyes, cervical spine, chest, waist, joints, wrists, and lungs from work-related diseases.

3

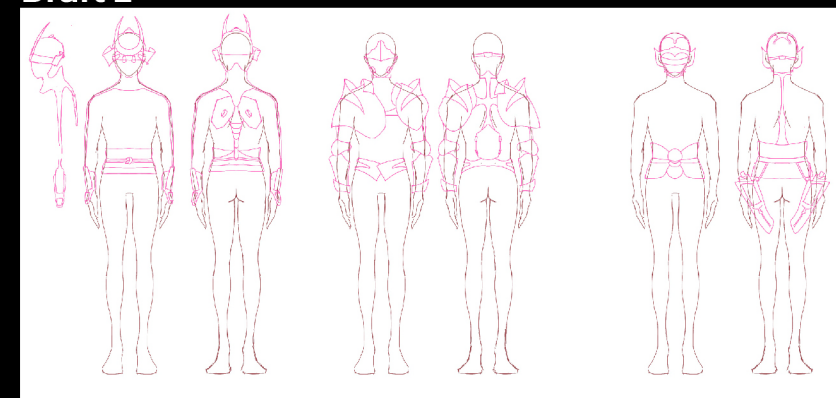
## DOCTOR'S EXOSKELETON

Referring to the style of Chinese armor, it protects the face, eyes, back, waist, joints, gastrointestinal organs from work-related diseases.

Draft 1



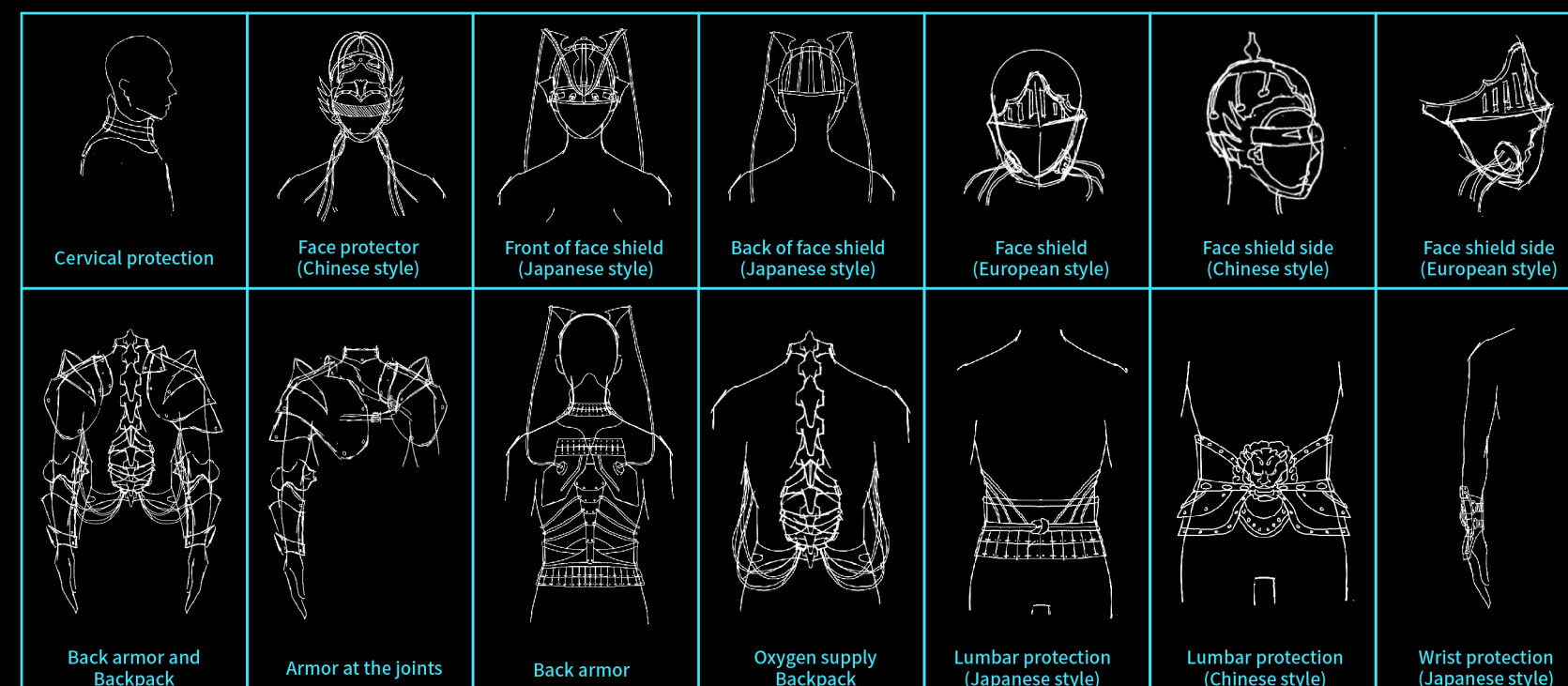
Draft 2



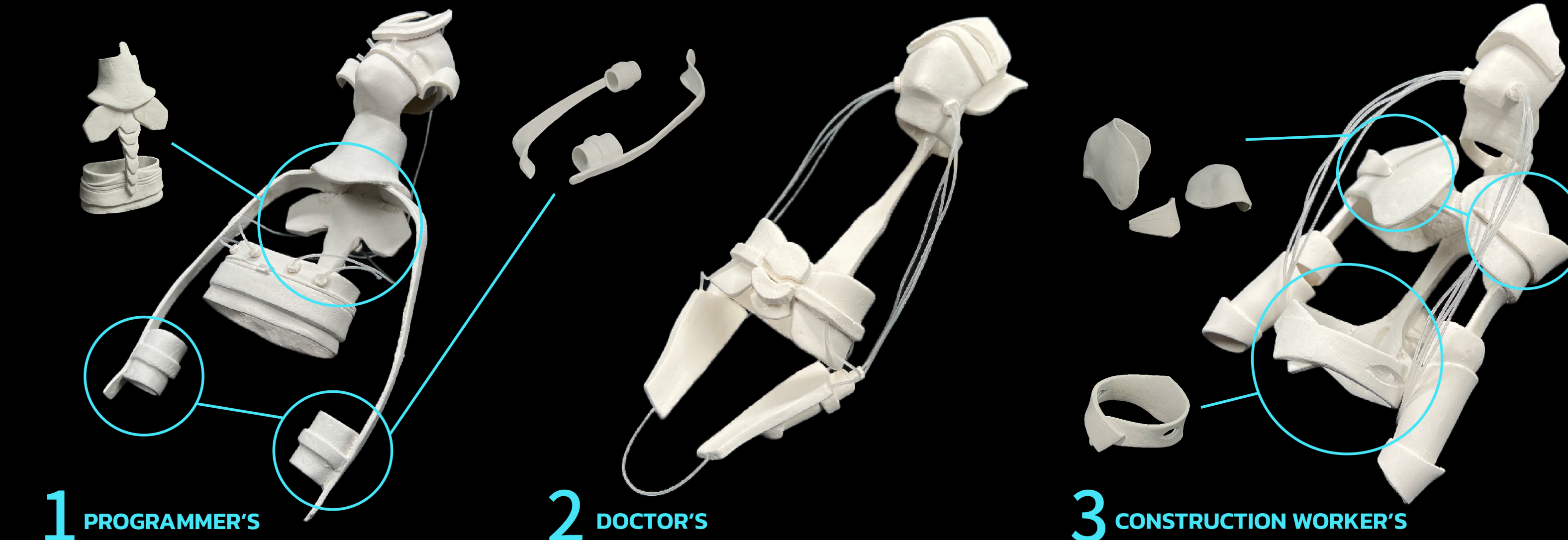
INSPIRATION



DETAIL SKETCH



# EXOSKELETON



1

## PROGRAMMER'S

Focusing on protecting and relieving muscle soreness caused by sitting for a long time, the sight expansion device on the helmet can help people see more areas at the same time.

2

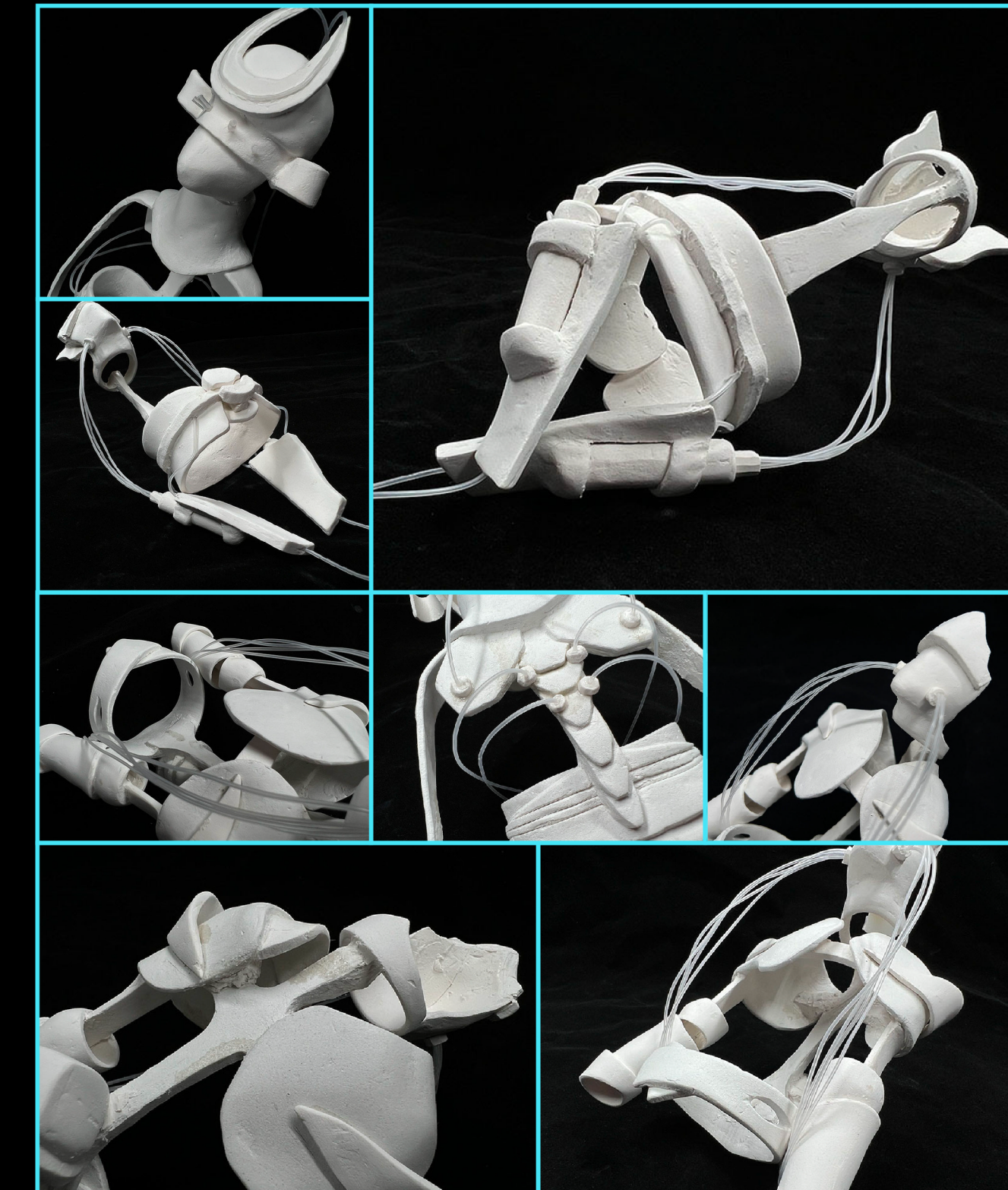
## DOCTOR'S

The emphasis is on solving the problem of drinking water, increasing the protection of the waist and cervical spine, and using a mask to protect the face.

3

## CONSTRUCTION WORKER'S

It mainly protects the joints of the human body, slows down the wear and tear of the joints, and provides oxygen-absorbing equipment to maintain physical strength.





# BALLONS

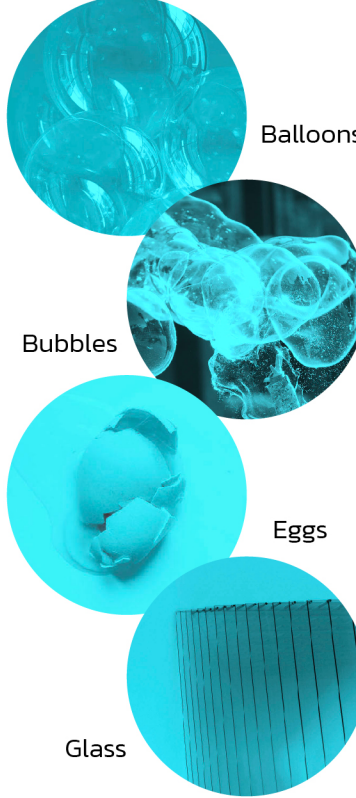
## THE REALITY OF EXOSKELETONS

A truly ergonomic physical interface should be tailored to an individual's own anthropometrics and needs. However, this concept is unlikely to be applicable to most current devices as they follow the concept of design adaptation to accommodate a large number of possible users.

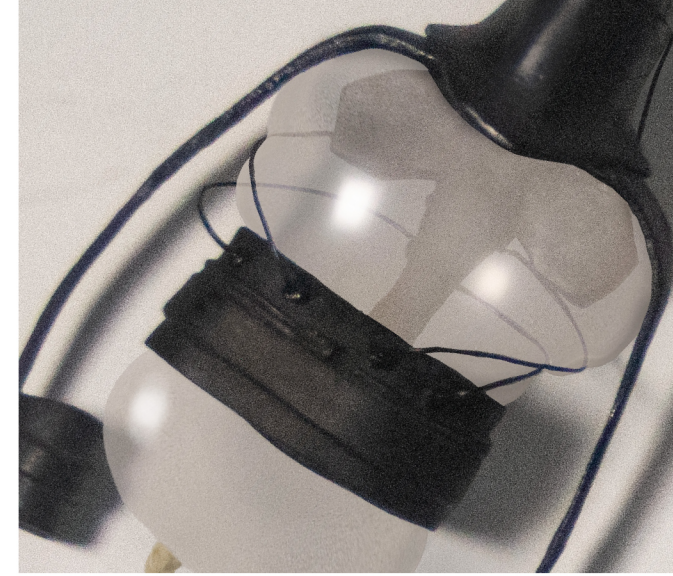


These exoskeletons themselves go against physiology and common sense. Exoskeletons can increase stress on people's bodies. If you want to "involution" harder, you have to withstand the pressure from the exoskeleton.

## DETAILS



## IMAGE OF HUMAN BODY



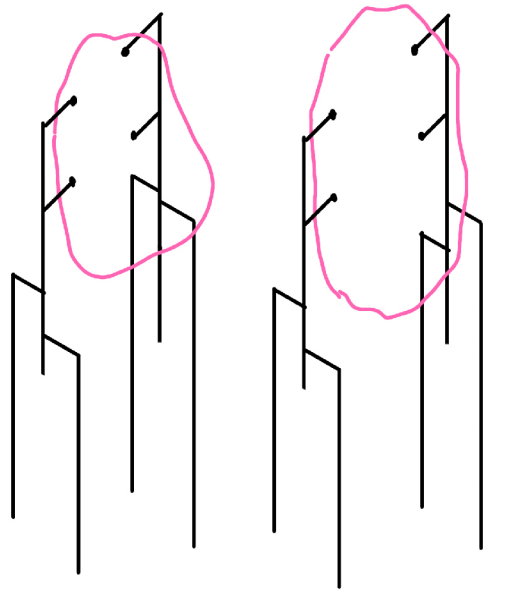
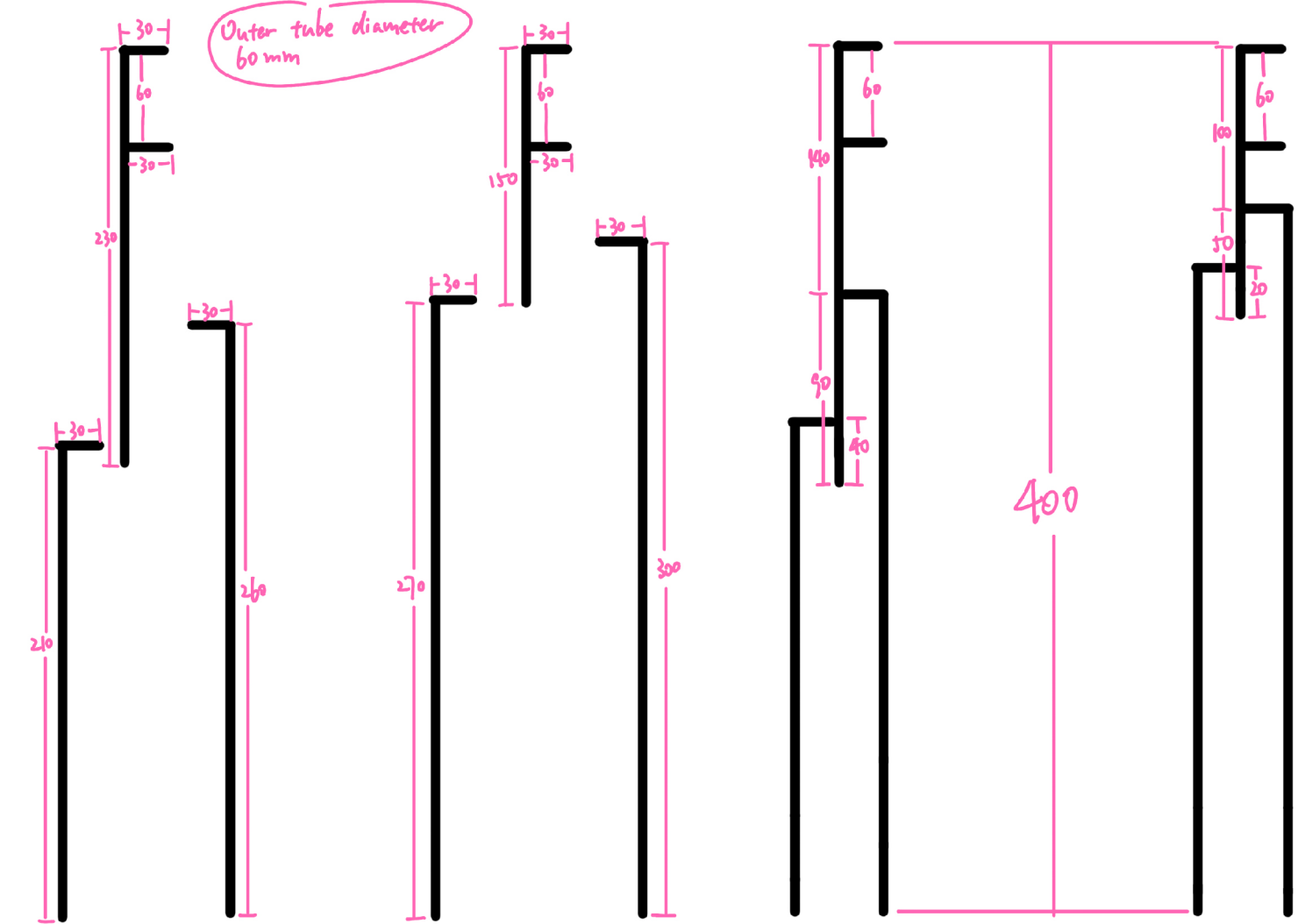
The exoskeleton is what we give to human beings to strengthen themselves. It is like a balloon with steel wires, and human beings become the shape that certain fixed societies want to be. While the exoskeleton is helping us work, it is also testing the limits of human endurance.



# BRACKET MAKING

The mother's womb is the place where new life is conceived. All the evolution and gestation of human beings came out of the mother's womb. Then the exoskeleton I created is a human evolution trend. I made a transparent pvc film to wrap it shape and place the manufactured exoskeleton in it. In addition, I placed pipes around the pvc film, fixed the whole body with black metal brackets and put it up for display to imitate the instruments in the hospital. All these are cold, but they can indeed help human beings become an evolutionary trend.

## BRACKET SKETCH

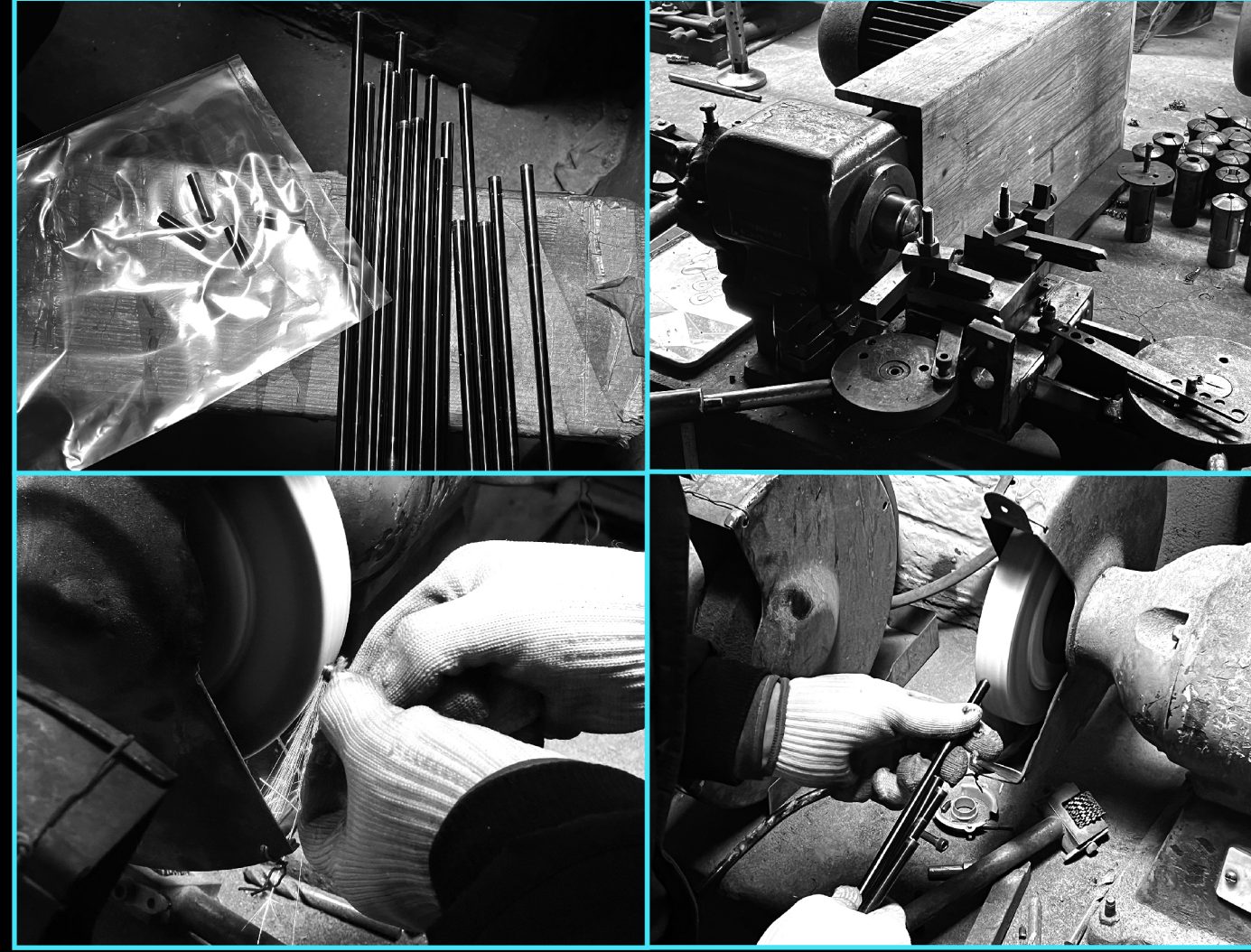


## INSPIRATION

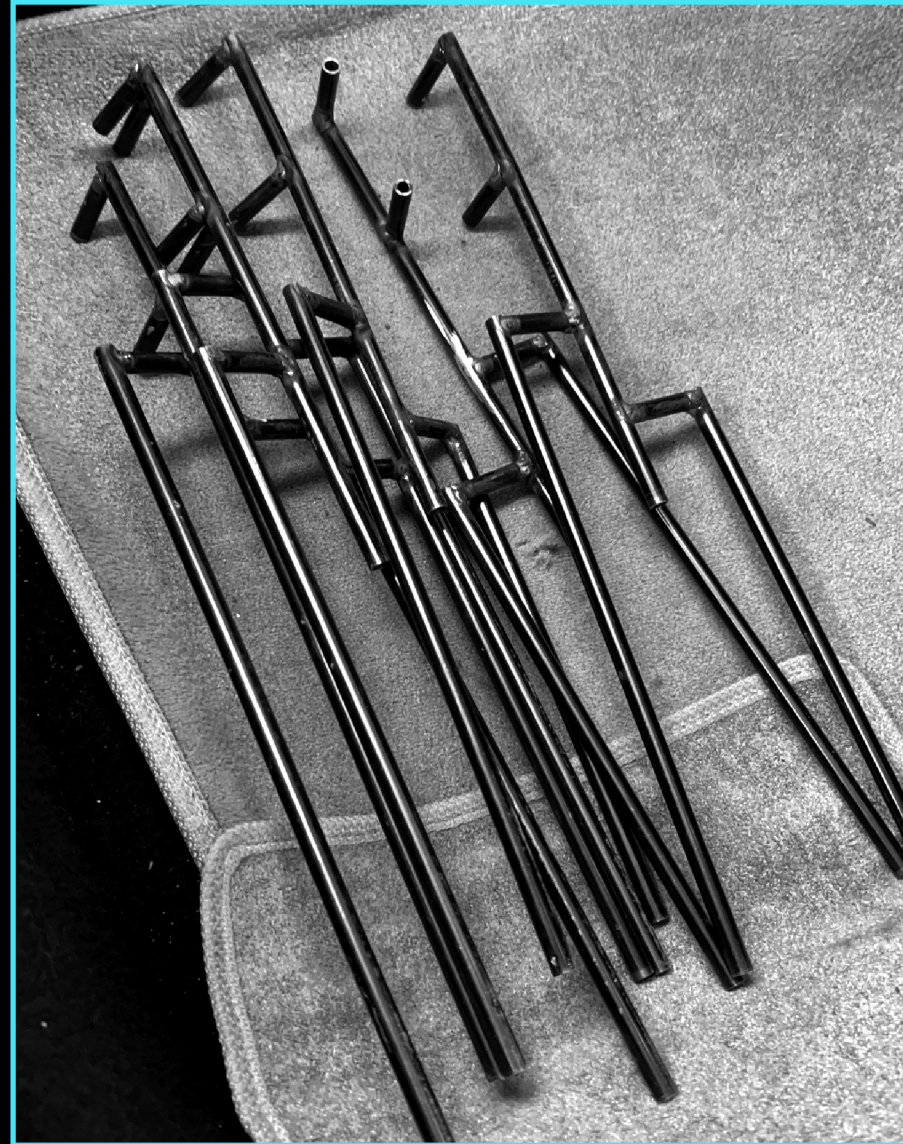


The mother's womb, the appearance of the embryo in the womb, the infusion tubes that exist everywhere in the hospital, the surgical equipment and operating table made of cold metal are all my sources of inspiration.

## CUTTING



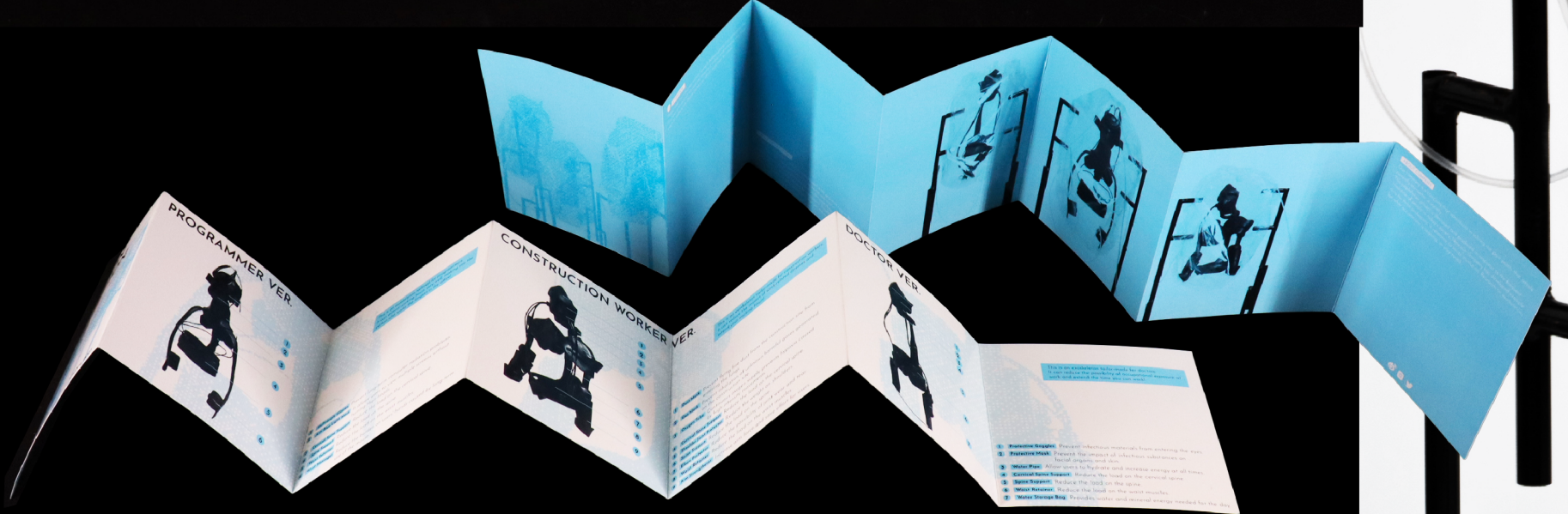
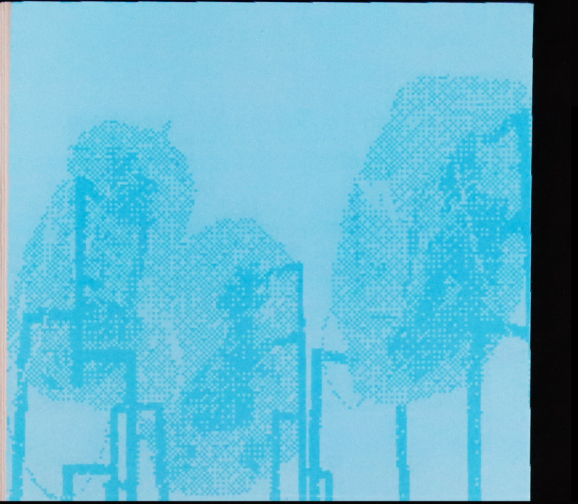
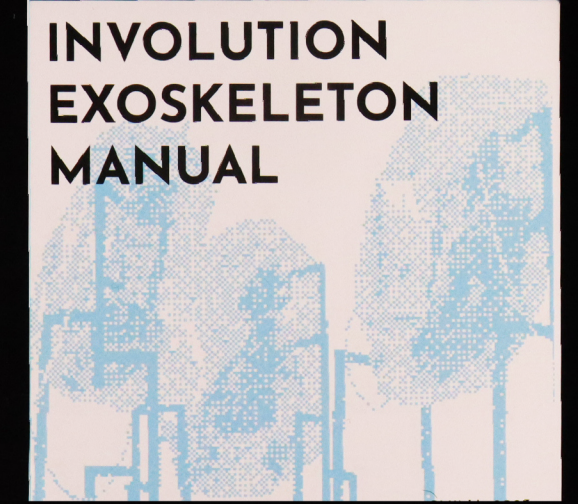
## WELDING





# EXOSKELETON MANUAL

This manual describes and explains the functions and parts of these three exoskeletons, and displays them in the form of instructions.



# EXOSKELETON

