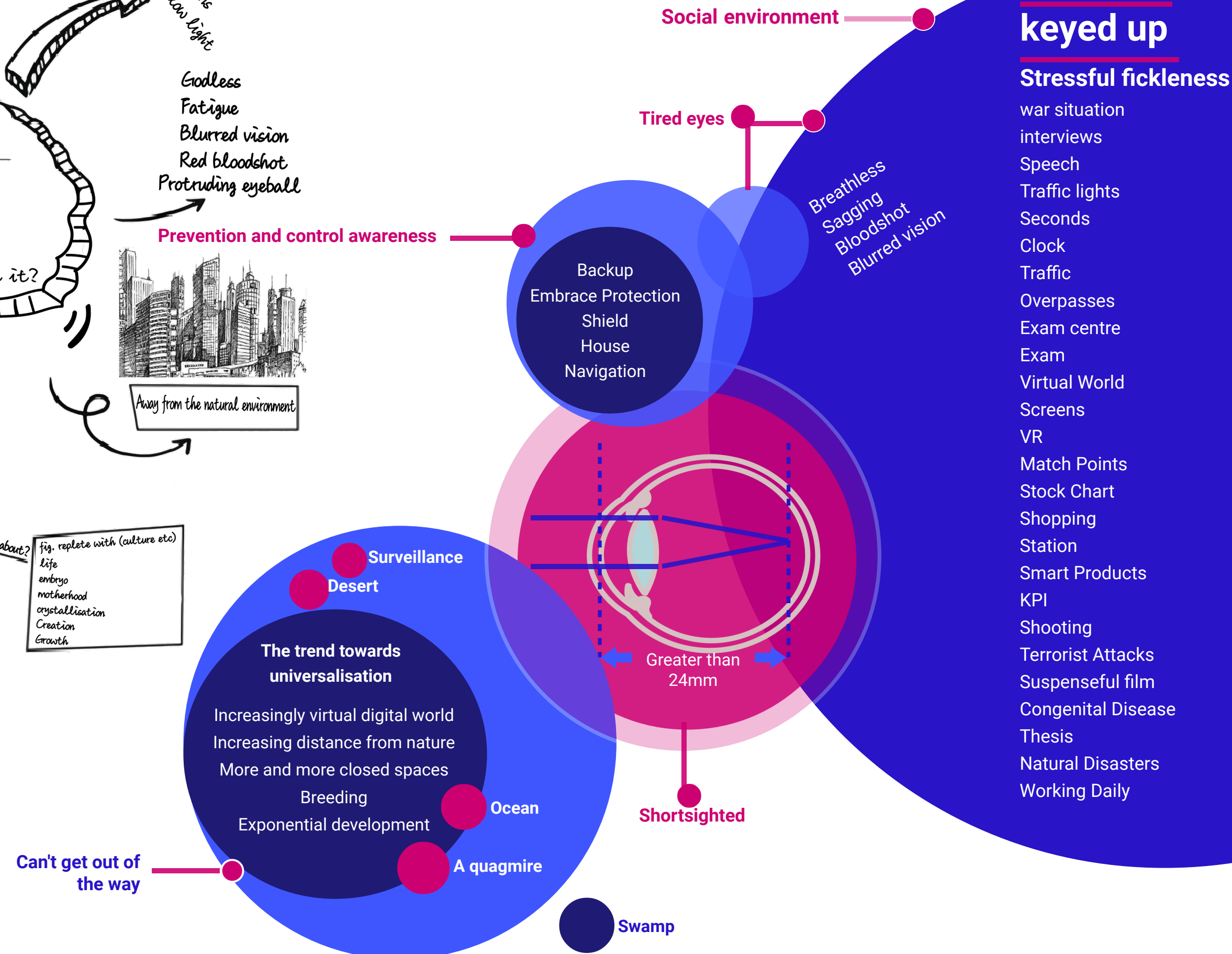
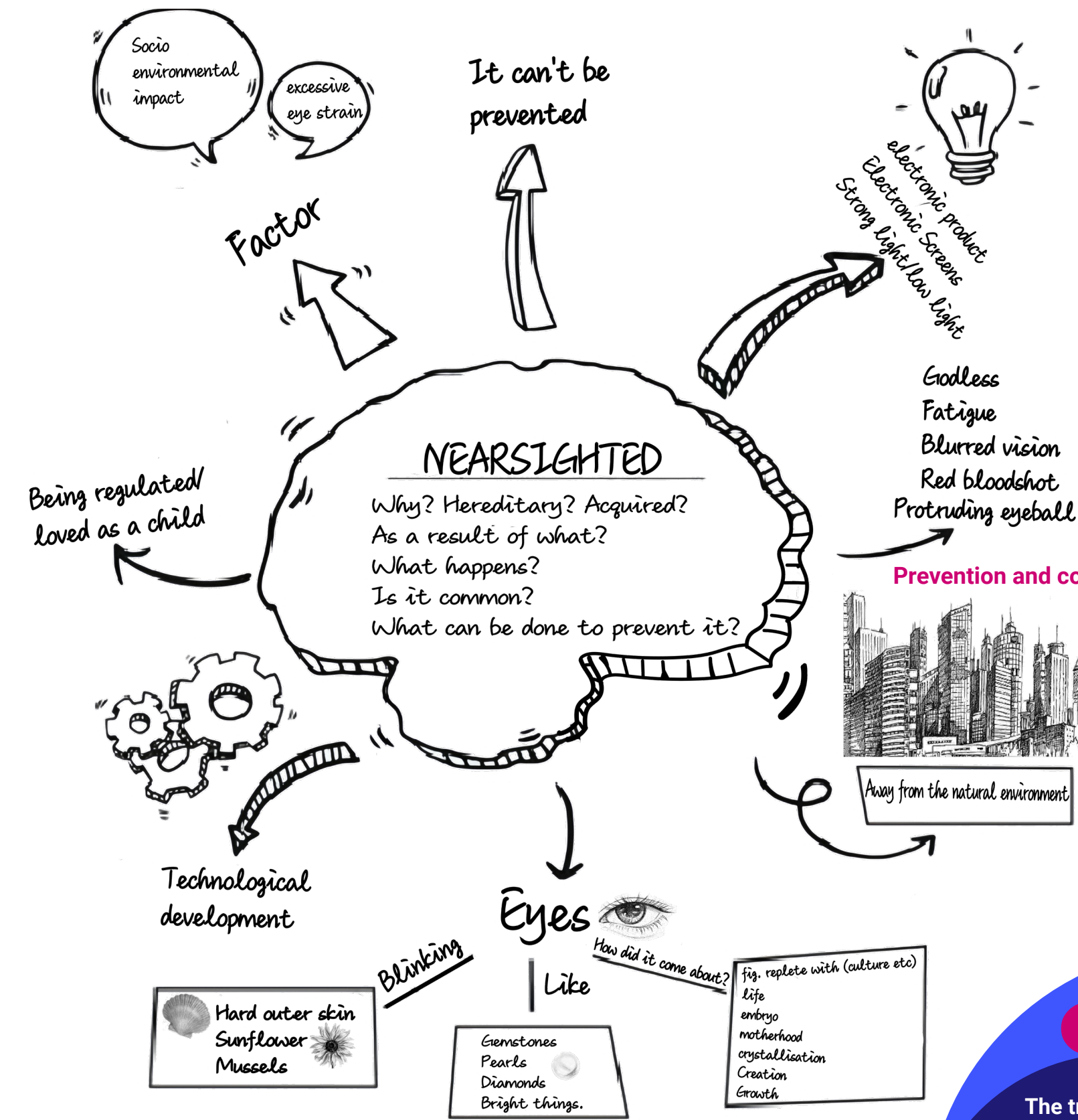


## Curious Eye, Crowded World





## Mindmap Analysis



## What's Affecting Our Eyes



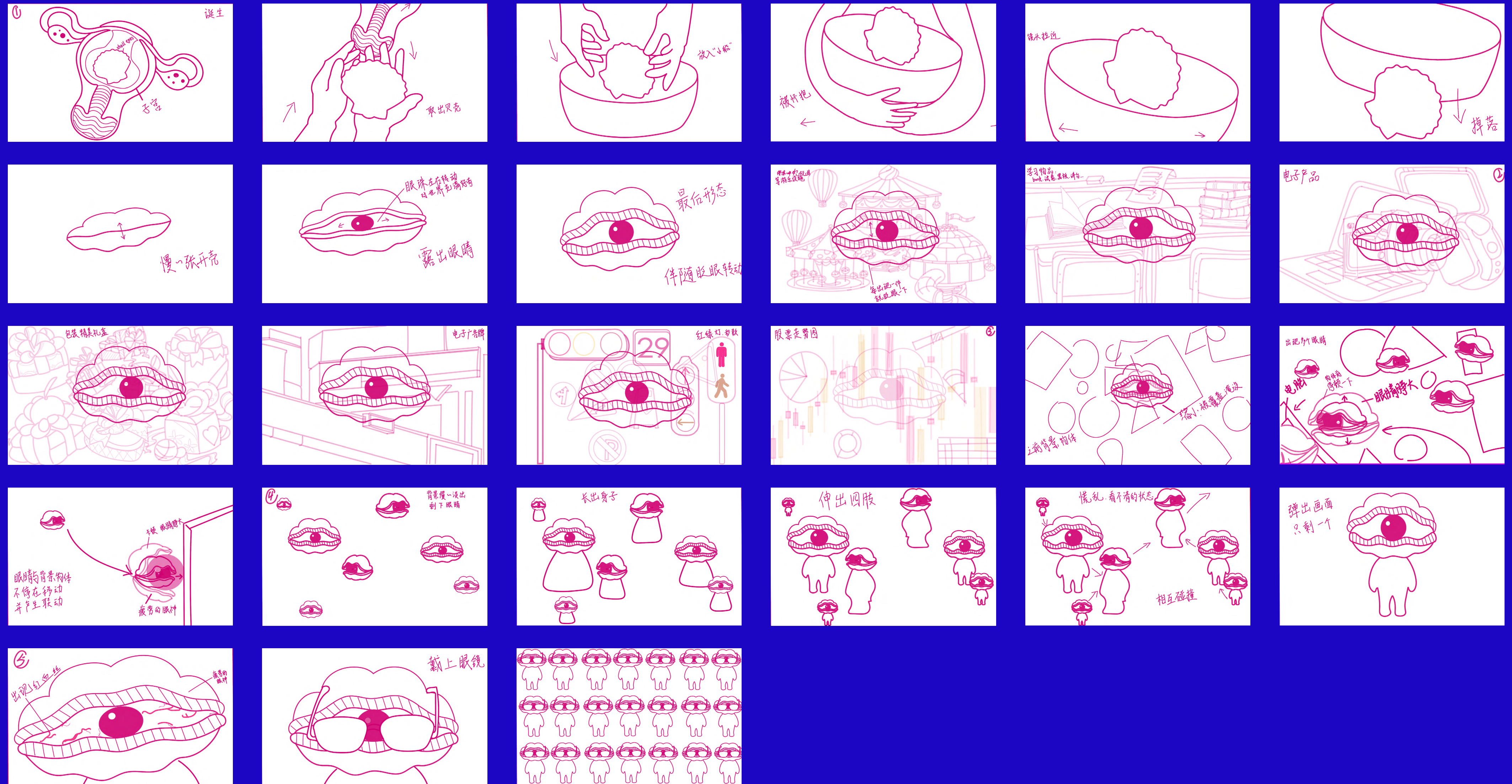


## Concept Generation

I use the birth of a pearl shell as the story line, where a rare treasure that is initially cherished and protected is placed in a noisy environment and deteriorates step by step. I hope to make the audience feel that the environment our eyes are facing now is not just irritating the eyes.



## Storyboard





# Animation Work

