

Barcelona Blanes Botanical Garden

This project is based on a trip to a botanical garden in Spain, exploring the interaction between geospatial space and personal emotions and behaviours through the lens of psychogeography. Drawing on the theoretical underpinnings of the lecture notes and Merlin Coverley's definition of psychogeography, the work is centred on the practical exploration of how people feel, remember and make meaning in geographical space.

The work is presented as an A2 size hand-drawn and digital combined map narrative illustration. Through the symbolic medium of maps, I don't just record the geographical structure of a space, but express how a person moves, perceives, thinks and leaves a psychological trajectory in space. This is both an external movement and an internal emotional flow.

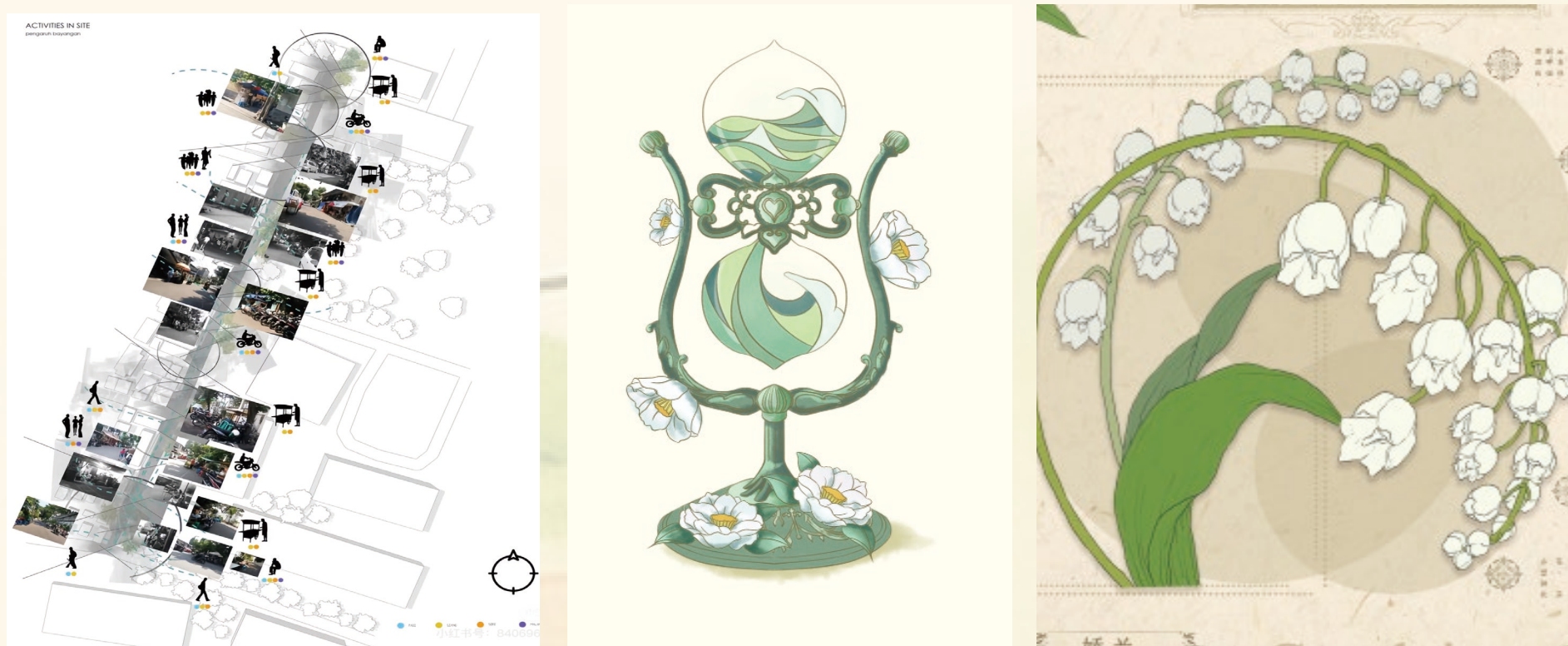
Video Link: <https://youtube.com/shorts/F8j3YsZRwl4>



RESEARCH

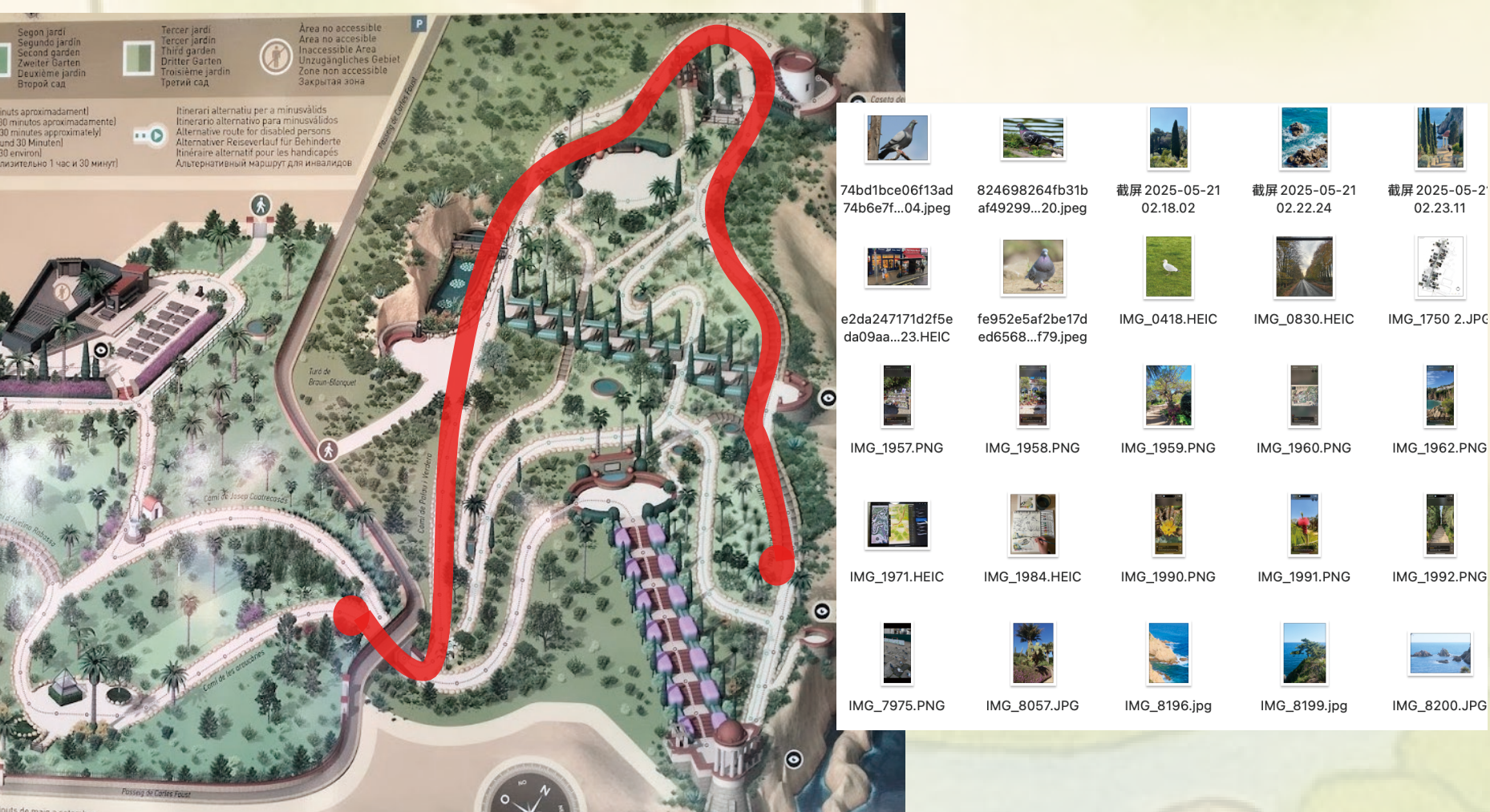
Map Cases&Style Reference

I chose to express my feelings about the walk in the form of an illustration that could depict some fun moments.

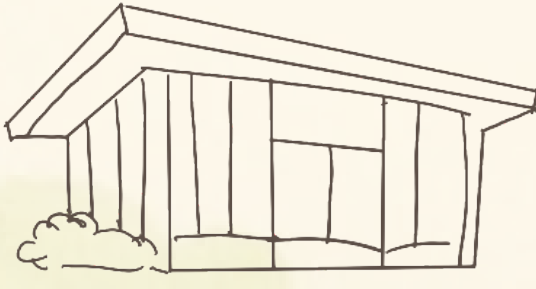


Select Coordinates&Data Collection

I chose the route that impressed me the most throughout the journey as the co-ordinates of the two points, specifically from the shop to the cliffs.



Progress&Sketch

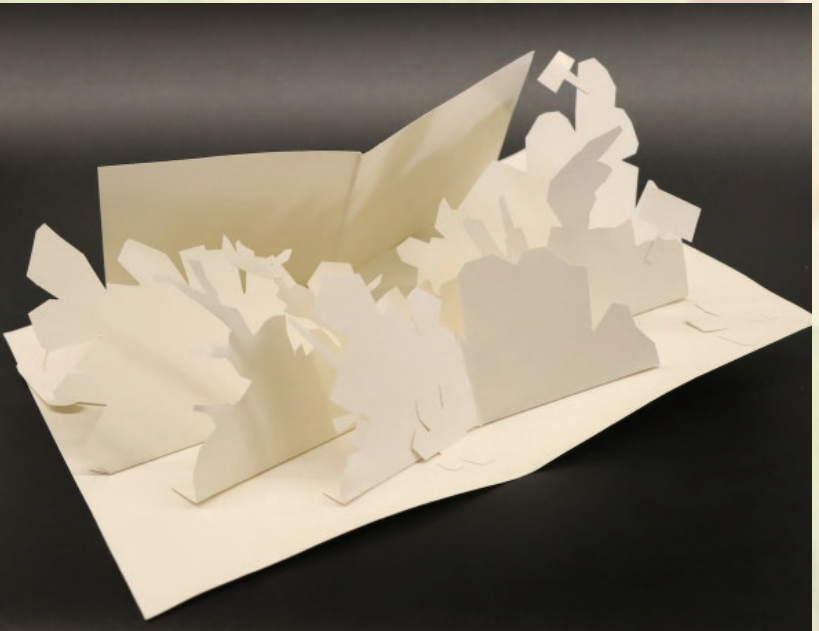


I tried to illustrate directly in watercolour at first, but I found that I didn't get a hazy, quiet feeling, so I decided to use watercolour and digital painting together.

Brushes for digital painting can be used to create vignettes but with colour development.



In order to achieve the effect of being able to interact, I added the element of a three-dimensional book into the design to achieve the effect of some spatial interaction



three-dimensional page

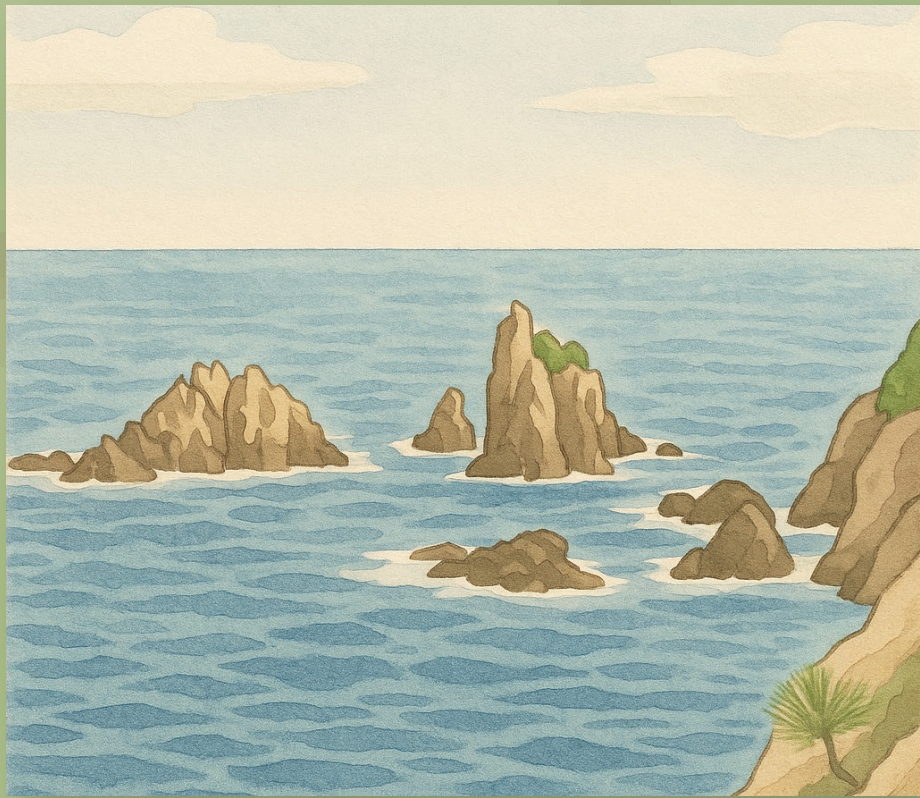
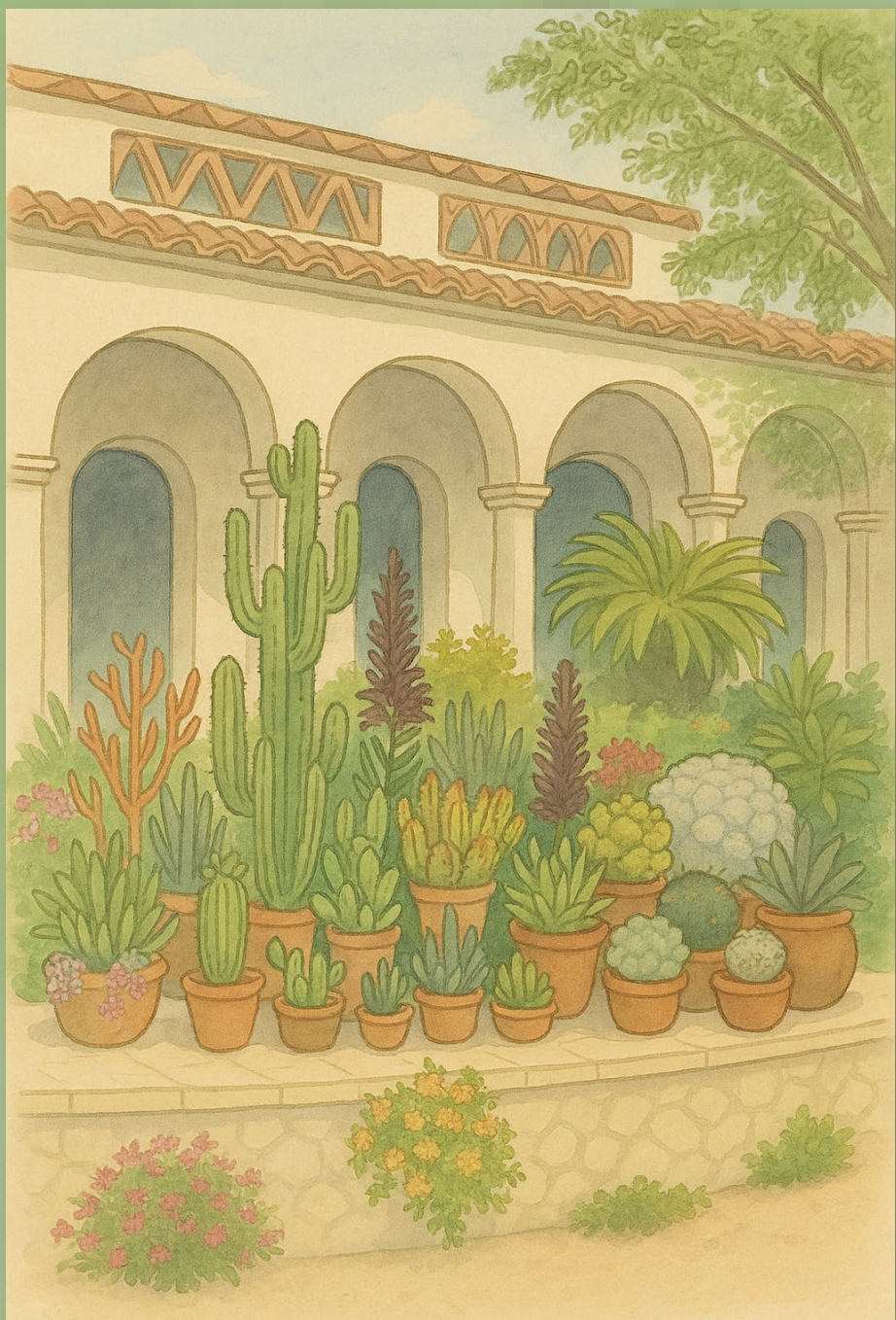


FINAL OUTCOME

Poster



Poster Cards



VISUAL RENDERING



Although this was a walk I personally experienced, the final printout of posters and postcards could be used as a linky merchandise for the Botanic Gardens!



I tried to incorporate the quiet, green feel of the botanical gardens into the postcards by designing them so that they could be opened up.



Video Link:
<https://youtube.com/shorts/F8j3YsZRwI4>