

Project 02

Territories and Interfaces

Yuxin Jiang
—35810467



Poster Design

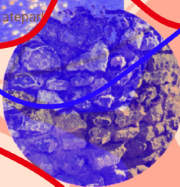
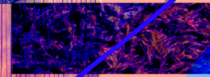
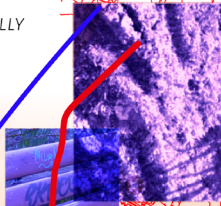
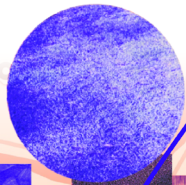
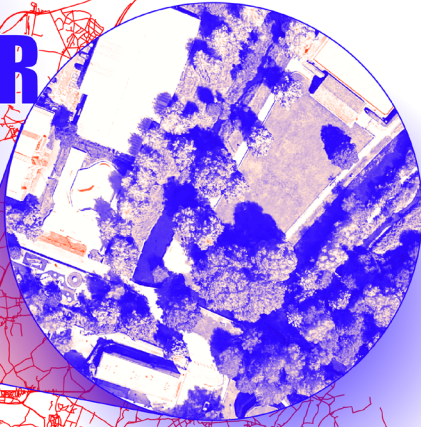


WINCHESTER WINCHESTER

River Park

RIVER PARK'S HISTORY

RIVER PARK IS A VERY HISTORIC SITE AND IT WAS AN INTEGRAL PART OF HYDE ABBEY. THE ABBEY WAS A LARGE BENEDICTINE MONASTERY WHICH OWNED MEADOWLAND TO THE EAST, NOW THE RECREATION GROUND. IT WAS DISSOLVED BY KING HENRY VIII'S HENCHMAN, SIR THOMAS WRIOTHSELEY, IN 1538. THE CHANCEL OF THE GREAT CHURCH IS NOW MARKED BY HYDE ABBEY GARDEN, CREATED IN 2003 AS WINCHESTER'S JUBILEE PROJECT AND DESIGNED BY KIM WILKIE, INTERNATIONALLY RENOWNED GARDEN DESIGNER AND HAMPSHIRE RESIDENT. THE GARDEN ECHOES THE ARCHAEOLOGICAL REMAINS OF THE ABBEY CHURCH WHICH LIE BENEATH IT.



Students Union

The location I chose was the Winchester RiverPark, and in the initial research I wanted to make more people aware of the location and wanted to use my map poster to introduce and publicise it. So I included a real photo of the RiverPark with a satellite map and a history of the park.

However, no matter how hard I tried, the poster did not achieve the desired effect. This made me rethink the project: should I really feel the park from my own point of view?

So I re-designed Project 2 - from my own point of view.

Illustration Sketch

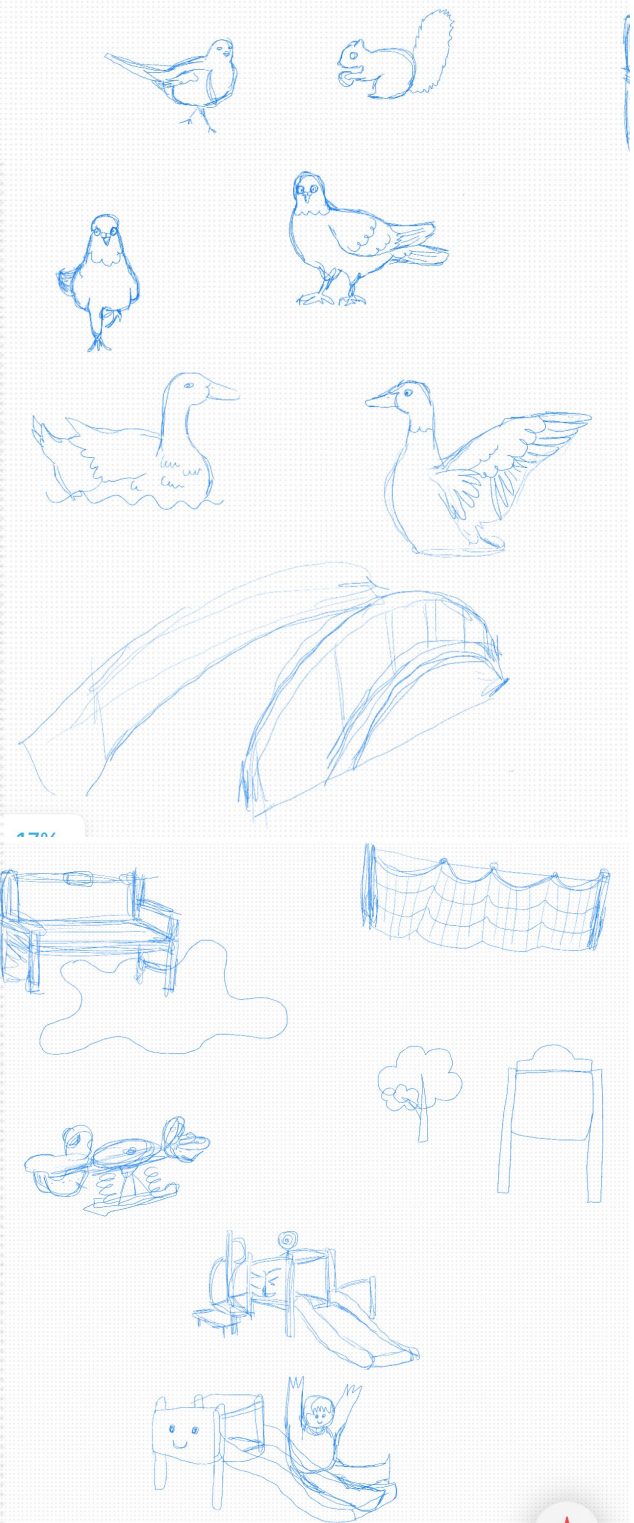
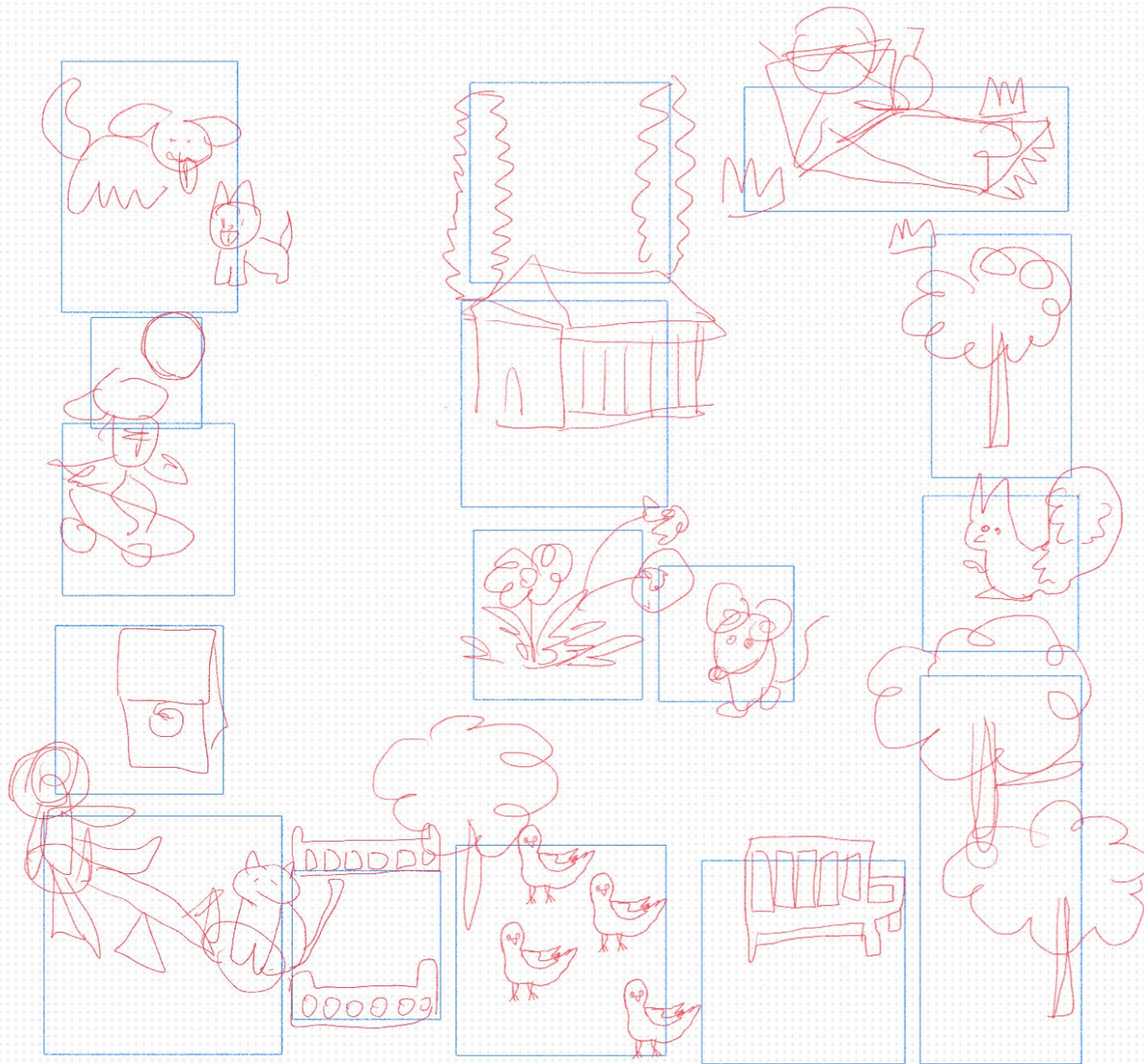


Illustration Map Design

This map illustration isn't about history or culture — it's a reflection of what I saw, heard, and felt in the riverside park.

Guided by emotion rather than research, I used illustration to capture a moment, hoping others can sense what I felt there.



